



Multi Line

Trustworthy toolholding solutions

Product catalog

REGO-FIX 

| | |
|------------------|---|
| Product offering | 4 |
|------------------|---|

| | | | |
|--|----------|--|----|
| 1.0 ML holders | | | |
| Minimize runout – boost productivity | 7 | | |
| 1.1 SK interface | | 1.3 HSK interface | |
| 1.1.1 Weldon end mill holders SK/WD | 8 | 1.3.1 Weldon end mill holders HSK/WD | 21 |
| 1.1.2 Universal shell/face mill holders SK/KFD | 10 | 1.3.2 Universal shell/face mill holders HSK/KFD | 24 |
| 1.1.3 Drill chucks SK/KBF | 11 | 1.3.3 Drill chucks HSK-A/KBF | 26 |
| 1.1.4 Morse taper holders SK/MK | 12 | 1.3.4 Morse taper holders HSK-A/MK | 27 |
| 1.2 BT interface | | 1.4 REGO-FIX CAPTO interface <small>licensed by Sandvik Coromant</small> | |
| 1.2.1 Weldon end mill holders BT/WD | 14 | 1.4.1 End mill holders REGO-FIX C/WD | 28 |
| 1.2.2 Universal shell/face mill holders BT/KFD | 16 | 1.4.2 Shell mill arbors REGO-FIX C/MA | 31 |
| 1.2.3 Drill chucks BT/KBF | 17 | | |
| 1.2.4 Morse taper holders BT/MK | 18 | | |

| | |
|---|-----------|
| 2.0 ML reduction sleeves | |
| Reduction sleeves for hydro chucks | 35 |
| 2.1 Reduction sleeves HS and HS-CF | 36 |

| | |
|----------------------------|----|
| 3.0 Multi Line accessories | 38 |
|----------------------------|----|

| | |
|---------------------------|----|
| 4.0 Technical information | 44 |
|---------------------------|----|

Experience Multi Line

1.0 ML holders

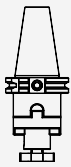
SK holders

SK/
WD



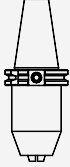
page 8

SK/
KFD



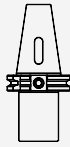
page 10

SK/
KBF



page 11

SK/
MK



page 12

BT/
WD



page 14

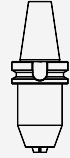
BT holders

BT/
KFD



page 16

BT/
KBF



page 17

BT/
MK



page 18

HSK/
WD



page 21

HSK holders

HSK/
KFD



page 24

HSK/
KBF



page 26

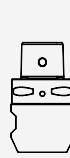
HSK/
MK



page 27

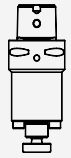
CAPTO holders

C/WD



page 28

C/MA

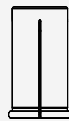


page 31

2.0 ML reduction sleeves

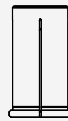
Reduction sleeves for hydro chucks

HS



page 35

HS-CF
with coolant flush



page 35

For wrenches and other accessories
please refer to page 38.

Suitable for carbide or HSS milling cutter in
all shank forms (Weldon, Whistle-Notch, etc.)





At a glance

Providing solutions for cutting-edge toolholding

Our holistic toolholding systems excel with extraordinary reliability, high precision and outstanding quality.

Pioneering spirit Fritz Weber, a Swiss master craftsman, tapped into the promising optimism in the 1950s and founded a small business called Fritz Weber Feinmechanik und Werkzeugbau. With his innovative spirit and stern determination, Fritz Weber gradually expanded his range of products. The company, now called REGO-FIX AG, achieved international recognition in 1972 with the invention of the ER clamping system. Thus, changing the toolholding industry forever. The ER System, made in Switzerland, is an industrial standard clamping element. It set the industry standard and even became DIN Standard (DIN 6499) in 1993. Today, the ER collet made by REGO-FIX is still the most used clamping collet worldwide.

Shaping the future REGO-FIX is an international family-owned company that is run by the sons of Fritz Weber. With its over 220 employees, REGO-FIX manufactures and markets high-precision toolholding systems worldwide. Headquartered in Tenniken, Switzerland, the company has established itself

as one of the leading manufacturers of toolholding systems and enjoys an excellent industry-wide reputation. Through its close network of distributors and subsidiaries in the US and China, REGO-FIX is strategically well positioned and possesses a worldwide presence in key markets. With groundbreaking product inventions, REGO-FIX developed from a small company to a global solution provider for cutting-edge toolholding systems. At the core of every product lies an aim for machining excellence and a passion for precision.

Cradle of precision REGO-FIX manufactures its products in Switzerland to fit highest quality standards. The products are used in the fields of automotive, aerospace, medical engineering, watchmaking, telecommunications and also in the die and mold industry.



Multi Line

Trustworthy toolholding solutions

For highest precision and best results the entire machining system counts. Therefore our components are carefully machined for optimum fit and accuracy. This guarantees the best runout and balance.

KFD



Universal shell/face mill holder

Weldon



End mill holder

KBF



Drill chuck

MK



Morse taper holder

Three systems – one brand

Our brand unites three different toolholding systems. Each system has different strengths to fit your machining needs, but at the heart of each system lies our aim for toolholding excellence.

powRgrip® System

For high-end machining with a total system **TIR ≤3 µm at 3xD**

PG colletholders

Taper accuracy AT3

Surface finish
max. Ra 0.25

High transferable torque
up to 1,100 Nm

PG collets

Clamping range
from 0.2 up to 25.4 mm

Special surface treatment
ensures longevity

Clamps all shanks
with tolerance h6

Vibration dampening
for high RPM

A holistic system approach

All parts are designed for exclusive fit to ensure toolholding excellence.

ER System

Our ideal system for standard machining

ER colletholders

Runout TIR ≤3 µm

Taper accuracy AT3

Surface finish max. Ra 0.25

Factory balanced

ER collets

Wide clamping range: from ER 8 up to ER 50 and
for diameters from 0.2 mm up to 36 mm

Clamping capacity 0.5 mm to 2.0 mm

Runout TIR ≤10 µm at 3xD for ER standard

Runout TIR ≤5 µm at 3xD for ER-UP

ER clamping nuts

Collet-locking system

Balanced by design

Special surface treatment improves transferable torque
and protects against corrosion

micRun® System

Total system **TIR ≤ 3 μm at 3xD**

MR colletholders

Taper accuracy AT3

Polished surface for improved performance

Balanced for high RPM

Vibration dampening

MR collets

Clamping range from 1.0 mm to 20.0 mm

Nominal diameter shanks h11

MR clamping nuts

Collet-locking system

Balanced by design

Grooveless design for higher RPM

Freewheel wrench head

A holistic system approach

All parts are designed for exclusive fit to ensure toolholding excellence.

SK holders

SK/
WD



page 8

SK/
KFD



page 10

SK/
KBF



page 11

SK/
MK



page 12

BT holders

BT/
WD



page 14

BT/
KFD



page 16

BT/
KBF



page 17

BT/
MK



page 18

HSK holders

HSK/
WD



page 21

HSK/
KFD



page 24

HSK/
KBF



page 26

HSK/
MK



page 27

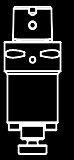
CAPTO holders

C/WD



page 28

C/MA



page 31



Minimize runout – boost productivity

Experience outstanding quality We at REGO-FIX know how to minimize your runout and boost your productivity. This is why we designed our ML holders to fulfill diverse criteria all crucial for achieving machining excellence.

The outstanding design paired with our experienced engineering make the ML products a solid option for traditional machining applications. Further increases in machining productivity is possible by incorporating our matching items.

The special design of the Multi Line reduction sleeves allows an efficient use of coolant through cutting tools. This self-sealing system works with the most common hydraulic expansion chucks. What you see is what you get: all our products bear the REGO-FIX triangle – our seal for outstanding Swiss quality.



Swiss quality standard
Our products marked Swiss made are manufactured at our headquarters in Tenniken, Switzerland.

Weldon end mill holders SK/WD

Universally suitable for different machining applications.

DIN 69871 / DIN ISO 7388-1

Features of end mill holders (Weldon)

Runout TIR $\leq 3 \mu\text{m}$

Measured from inner bore to outer taper.

Taper accuracy AT3

Better spindle-to-holder fit and accuracy.

Side locking screw

For highest transferable torque.

Coolant supply

All toolholders with form A+AD can be used for cooling. Form A+AD delivers the coolant supply through the taper.

ID chip hole

In accordance with DIN 69873 for 10 mm diameter.



Weldon end mill holders SK/WD

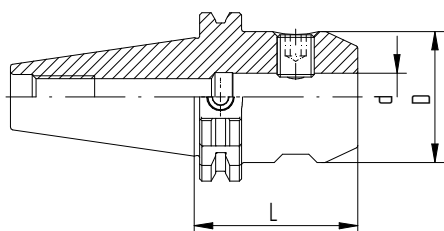
SK/WD

DIN 69871

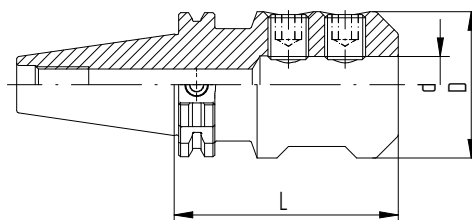
DIN ISO 7388-1

| Type | Part no. | Dimensions [mm] | | | Form A+AD | Drawing |
|---------------------|------------|-----------------|----|-----|-----------|---------|
| | | D | d | L | | |
| SK 40 | | | | | | |
| SK 40 / WD 6 x 050 | 2240.30620 | 25 | 6 | 50 | • | 1 |
| SK 40 / WD 8 x 050 | 2240.30820 | 28 | 8 | 50 | • | 1 |
| SK 40 / WD 10 x 050 | 2240.31020 | 35 | 10 | 50 | • | 1 |
| SK 40 / WD 12 x 050 | 2240.31220 | 42 | 12 | 50 | • | 1 |
| SK 40 / WD 14 x 050 | 2240.31420 | 44 | 14 | 50 | • | 1 |
| SK 40 / WD 16 x 063 | 2240.31630 | 48 | 16 | 63 | • | 1 |
| SK 40 / WD 18 x 063 | 2240.31830 | 50 | 18 | 63 | • | 1 |
| SK 40 / WD 20 x 063 | 2240.32030 | 52 | 20 | 63 | • | 1 |
| SK 40 / WD 25 x 100 | 2240.32560 | 65 | 25 | 100 | • | 2 |
| SK 40 / WD 32 x 100 | 2240.33260 | 72 | 32 | 100 | • | 2 |
| SK 50 | | | | | | |
| SK 50 / WD 6 x 063 | 2250.30630 | 25 | 6 | 63 | • | 1 |
| SK 50 / WD 8 x 063 | 2250.30830 | 28 | 8 | 63 | • | 1 |
| SK 50 / WD 10 x 063 | 2250.31030 | 35 | 10 | 63 | • | 1 |
| SK 50 / WD 12 x 063 | 2250.31230 | 42 | 12 | 63 | • | 1 |
| SK 50 / WD 14 x 063 | 2250.31430 | 44 | 14 | 63 | • | 1 |
| SK 50 / WD 16 x 063 | 2250.31630 | 48 | 16 | 63 | • | 1 |
| SK 50 / WD 18 x 063 | 2250.31830 | 50 | 18 | 63 | • | 1 |
| SK 50 / WD 20 x 063 | 2250.32030 | 52 | 20 | 63 | • | 1 |
| SK 50 / WD 25 x 080 | 2250.32550 | 65 | 25 | 80 | • | 2 |
| SK 50 / WD 32 x 100 | 2250.33260 | 72 | 32 | 100 | • | 2 |
| SK 50 / WD 40 x 100 | 2250.34060 | 80 | 40 | 100 | • | 2 |

Included in delivery: End mill holder and lock screw.



Drawing 1 SK / WD



Drawing 2 SK / WD

Universal shell/face mill holders SK/KFD

SK/KFD

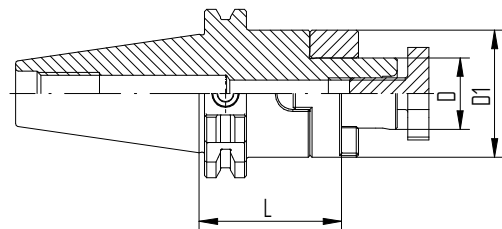
DIN 69871

DIN ISO 7388-1

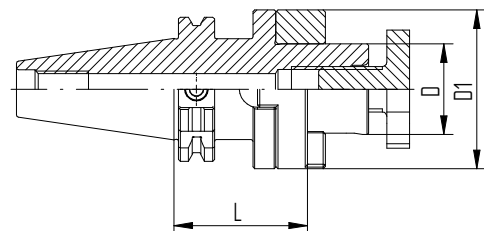
| Type | Part no. | Dimensions [mm] | | | | Form A+AD | Drawing | Accessory |
|----------------------|------------|-----------------|----|----|--------|-----------|---------|-----------|
| | | D | D1 | L | Wrench | | | |
| SK 40 | | | | | | | | |
| SK 40 / KFD 16 x 055 | 2240.41630 | 16 | 32 | 55 | • | 1 | FDS 16 | |
| SK 40 / KFD 22 x 055 | 2240.42230 | 22 | 40 | 55 | • | 1 | FDS 22 | |
| SK 40 / KFD 27 x 055 | 2240.42730 | 27 | 48 | 55 | • | 1 | FDS 27 | |
| SK 40 / KFD 32 x 060 | 2240.43240 | 32 | 58 | 60 | • | 2 | FDS 32 | |
| SK 40 / KFD 40 x 060 | 2240.44040 | 40 | 70 | 60 | • | 2 | FDS 40 | |
| SK 50 | | | | | | | | |
| SK 50 / KFD 16 x 055 | 2250.41630 | 16 | 32 | 55 | • | 1 | FDS 16 | |
| SK 50 / KFD 22 x 055 | 2250.42230 | 22 | 40 | 55 | • | 1 | FDS 22 | |
| SK 50 / KFD 27 x 055 | 2250.42730 | 27 | 48 | 55 | • | 1 | FDS 27 | |
| SK 50 / KFD 32 x 055 | 2250.43230 | 32 | 58 | 55 | • | 1 | FDS 32 | |
| SK 50 / KFD 40 x 055 | 2250.44030 | 40 | 70 | 55 | • | 1 | FDS 40 | |
| SK 50 / KFD 50 x 070 | 2250.45050 | 50 | 90 | 70 | • | 2 | FDS 50 | |

Included in delivery: Universal shell/face mill holder, lock screw, feather key and drive ring.

For details on our FDS wrenches, please refer to page 40.



Drawing 1 SK / KFD



Drawing 2 SK / KFD

| Type | Part no. | Dimensions [mm] | | | Form A | Form A+AD |
|-----------------------|------------|-----------------|------|-----|--------|-----------|
| | | D | d | L | | |
| SK 30 | | | | | | |
| SK 30 / KBF 1 – 13 mm | 2230.50100 | 50 | 1–13 | 111 | • | – |
| SK 40 | | | | | | |
| SK 40 / KBF 1 – 13 mm | 2240.50103 | 50 | 1–13 | 90 | – | • |
| SK 50 | | | | | | |
| SK 50 / KBF 1 – 13 mm | 2250.50103 | 50 | 1–13 | 106 | – | • |

Included in delivery: Drill chuck and Allen key™.

Drill chucks SK / KBF

Features and benefits

Clamping range

1–13 mm

Runout TIR

0.03 mm

Maximum tightening torque

20 Nm

Clamping force (at 20 Nm tightening torque)

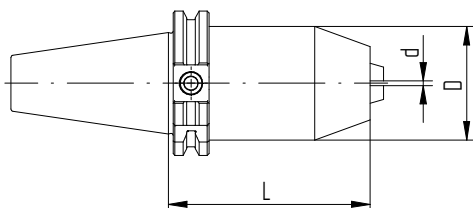
80 Nm

Maximum rpm

35,000 min⁻¹



SK / KBF



SK / KBF

Morse taper holders SK / MK

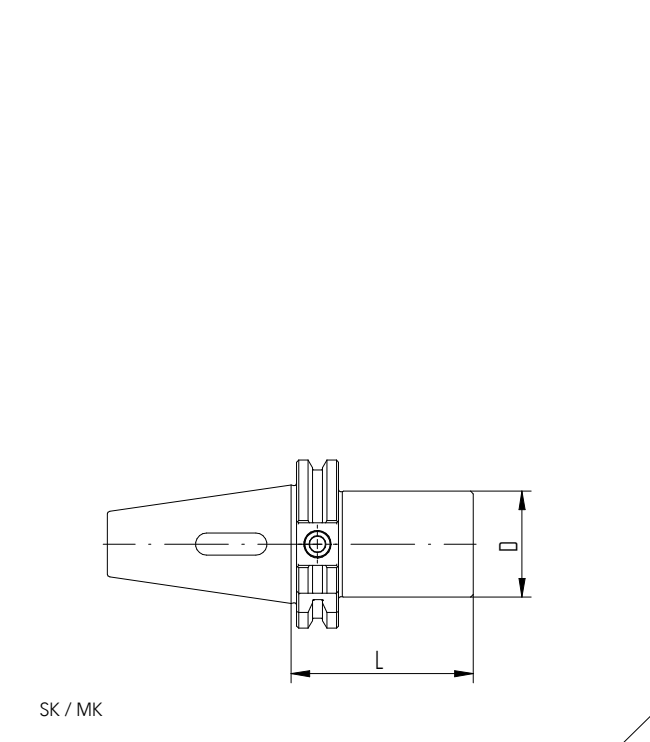
SK / MK

DIN 69871

DIN ISO 7388-1

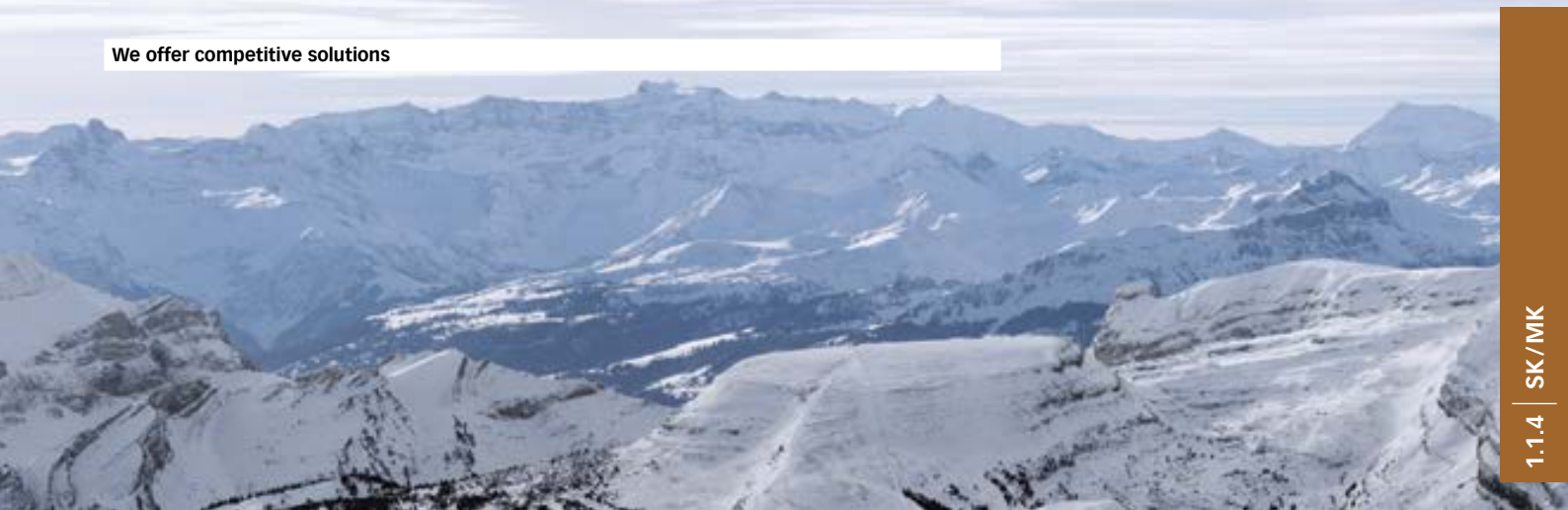
1.1.4 SK / MK

| Type | Part no. | Dimensions [mm] | |
|--------------------|------------|-----------------|----|
| | | D | L |
| SK 40 | | | |
| SK 40 / MK 1 x 050 | 2240.80110 | 25 | 50 |
| SK 40 / MK 2 x 050 | 2240.80210 | 32 | 50 |
| SK 40 / MK 3 x 070 | 2240.80320 | 40 | 70 |
| SK 40 / MK 4 x 095 | 2240.80430 | 48 | 95 |



**Customers from all around the world
rely on Swiss-made REGO-FIX products.
From Switzerland, we deliver
customers in fast-paced industries with
the highest demands for precision.**

We offer competitive solutions



Weldon end mill holders BT/WD

Universally suitable different machining applications, the BT interface toolholders cater to different machining needs.

MAS 403 / JIS B 6339 / DIN ISO 7388-2

Features of end mill holders (Weldon)

Runout TIR $\leq 3 \mu\text{m}$

Measured from inner bore to outer taper.

Taper accuracy AT3

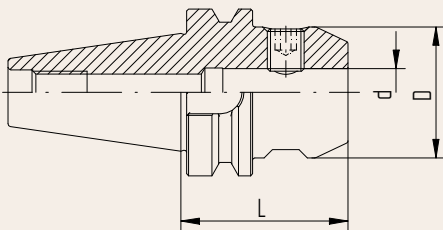
Better spindle-to-holder fit and accuracy.

Side locking screw

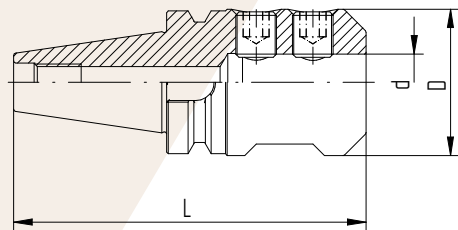
For highest transferable torque.

Coolant supply

All toolholders with form A+AD can be used for cooling. Form A+AD delivers the coolant supply through the taper.



Drawing 1 BT / WD



Drawing 2 BT / WD

Weldon end mill holders BT/WD

BT/WD

MAS 403

JIS B 6339

DIN ISO 7388-2

| Type | Part no. | Dimensions [mm] | | | Form A+AD | Drawing |
|---------------------|------------|-----------------|----|-----|-----------|---------|
| | | D | d | L | | |
| BT 30 | | | | | | |
| BT 30 / WD 6 x 050 | 2130.30620 | 25 | 6 | 50 | • | 1 |
| BT 30 / WD 8 x 050 | 2130.30820 | 28 | 8 | 50 | • | 1 |
| BT 30 / WD 10 x 050 | 2130.31020 | 35 | 10 | 50 | • | 1 |
| BT 30 / WD 12 x 050 | 2130.31220 | 42 | 12 | 50 | • | 1 |
| BT 30 / WD 14 x 050 | 2130.31420 | 44 | 14 | 50 | • | 1 |
| BT 30 / WD 16 x 063 | 2130.31630 | 48 | 16 | 63 | • | 1 |
| BT 30 / WD 18 x 063 | 2130.31830 | 50 | 18 | 63 | • | 1 |
| BT 30 / WD 20 x 063 | 2130.32030 | 52 | 20 | 63 | • | 1 |
| BT 40 | | | | | | |
| BT 40 / WD 6 x 050 | 2140.30620 | 25 | 6 | 50 | • | 1 |
| BT 40 / WD 8 x 050 | 2140.30820 | 28 | 8 | 50 | • | 1 |
| BT 40 / WD 10 x 063 | 2140.31030 | 35 | 10 | 63 | • | 1 |
| BT 40 / WD 12 x 063 | 2140.31230 | 42 | 12 | 63 | • | 1 |
| BT 40 / WD 14 x 063 | 2140.31430 | 44 | 14 | 63 | • | 1 |
| BT 40 / WD 16 x 063 | 2140.31630 | 48 | 16 | 63 | • | 1 |
| BT 40 / WD 18 x 063 | 2140.31830 | 50 | 18 | 63 | • | 1 |
| BT 40 / WD 20 x 063 | 2140.32030 | 52 | 20 | 63 | • | 1 |
| BT 40 / WD 25 x 090 | 2140.32550 | 65 | 25 | 90 | • | 2 |
| BT 40 / WD 32 x 100 | 2140.33260 | 72 | 32 | 100 | • | 2 |
| BT 50 | | | | | | |
| BT 50 / WD 6 x 063 | 2150.30630 | 25 | 6 | 63 | • | 1 |
| BT 50 / WD 8 x 063 | 2150.30830 | 28 | 8 | 63 | • | 1 |
| BT 50 / WD 10 x 063 | 2150.31030 | 35 | 10 | 63 | • | 1 |
| BT 50 / WD 12 x 080 | 2150.31250 | 42 | 12 | 80 | • | 1 |
| BT 50 / WD 14 x 080 | 2150.31450 | 44 | 14 | 80 | • | 1 |
| BT 50 / WD 16 x 080 | 2150.31650 | 48 | 16 | 80 | • | 1 |
| BT 50 / WD 18 x 080 | 2150.31850 | 50 | 18 | 80 | • | 1 |
| BT 50 / WD 20 x 080 | 2150.32050 | 52 | 20 | 80 | • | 1 |
| BT 50 / WD 25 x 100 | 2150.32560 | 65 | 25 | 100 | • | 2 |
| BT 50 / WD 32 x 105 | 2150.33260 | 72 | 32 | 105 | • | 2 |
| BT 50 / WD 40 x 110 | 2150.34060 | 80 | 40 | 110 | • | 2 |

Included in delivery: End mill holder and lock screw.

Universal shell/face mill holders BT /KFD

BT /KFD

MAS 403

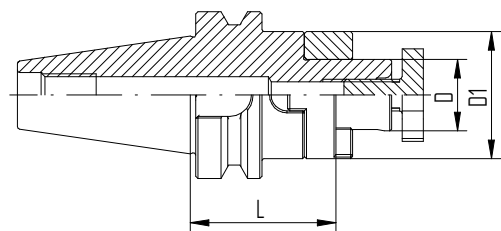
JIS B 6339

DIN ISO 7388-2

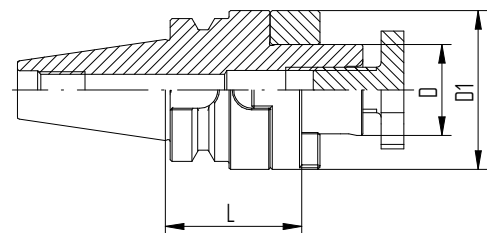
| Type | Part no. | Dimensions [mm] | | | | | Drawing | Accessory |
|----------------------|------------|-----------------|----|----|-----------|--------|---------|-----------|
| | | D | D1 | L | Form A+AD | Wrench | | |
| BT 30 | | | | | | | | |
| BT 30 / KFD 16 x 045 | 2130.41620 | 16 | 32 | 45 | • | 1 | FDS 16 | |
| BT 30 / KFD 22 x 047 | 2130.42220 | 22 | 40 | 47 | • | 1 | FDS 22 | |
| BT 30 / KFD 27 x 049 | 2130.42720 | 27 | 48 | 49 | • | 2 | FDS 27 | |
| BT 30 / KFD 32 x 053 | 2130.43230 | 32 | 58 | 53 | • | 2 | FDS 32 | |
| BT 40 | | | | | | | | |
| BT 40 / KFD 16 x 055 | 2140.41630 | 16 | 32 | 55 | • | 1 | FDS 16 | |
| BT 40 / KFD 22 x 055 | 2140.42230 | 22 | 40 | 55 | • | 1 | FDS 22 | |
| BT 40 / KFD 27 x 055 | 2140.42730 | 27 | 48 | 55 | • | 1 | FDS 27 | |
| BT 40 / KFD 32 x 060 | 2140.43240 | 32 | 58 | 60 | • | 1 | FDS 32 | |
| BT 40 / KFD 40 x 060 | 2140.44040 | 40 | 70 | 60 | • | 2 | FDS 40 | |
| BT 50 | | | | | | | | |
| BT 50 / KFD 16 x 070 | 2150.41630 | 16 | 32 | 70 | • | 1 | FDS 16 | |
| BT 50 / KFD 22 x 070 | 2150.42230 | 22 | 40 | 70 | • | 1 | FDS 22 | |
| BT 50 / KFD 27 x 070 | 2150.42750 | 27 | 48 | 70 | • | 1 | FDS 27 | |
| BT 50 / KFD 32 x 070 | 2150.43250 | 32 | 58 | 70 | • | 1 | FDS 32 | |
| BT 50 / KFD 40 x 070 | 2150.44050 | 40 | 70 | 70 | • | 1 | FDS 40 | |
| BT 50 / KFD 50 x 070 | 2150.45050 | 50 | 90 | 70 | • | 1 | FDS 50 | |

For details on our FDS wrenches, please refer to page 40.

Included in delivery: Universal shell/face mill holder, lock screw, feather key and drive ring.



Drawing 1 BT / KFD



Drawing 2 BT / KFD

Drill chucks BT / KBF

BT / KBF

MAS 403

JIS B 6339

DIN ISO 7388-2

| Type | Part no. | d | Dimensions [mm] | | | |
|-----------------------|------------|------|-----------------|-----|--------|-----------|
| | | | D | L | Form A | Form A+AD |
| BT 30 | | | | | | |
| BT 30 / KBF 1 – 13 mm | 2130.50100 | 1–13 | 50 | 95 | • | – |
| BT 40 | | | | | | |
| BT 40 / KBF 1 – 13 mm | 2140.50103 | 1–13 | 50 | 98 | – | • |
| BT 50 | | | | | | |
| BT 50 / KBF 1 – 13 mm | 2150.50103 | 1–13 | 50 | 100 | – | • |

Included in delivery: Drill chuck and Allen key™.

Drill chucks BT / KBF

Features and benefits

Clamping range

1–13 mm

Runout TIR

0.03 mm

Maximum tightening torque

20 Nm

Clamping force (at 20 Nm tightening torque)

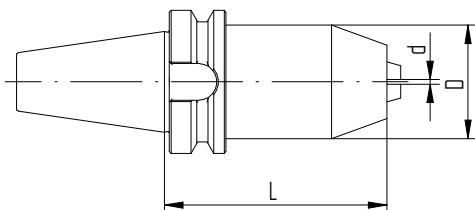
80 Nm

Maximum rpm

35,000 min⁻¹



BT / KBF



BT / KBF

Morse taper holders BT / MK

BT / MK

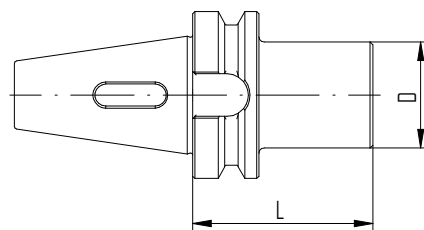
MAS 403

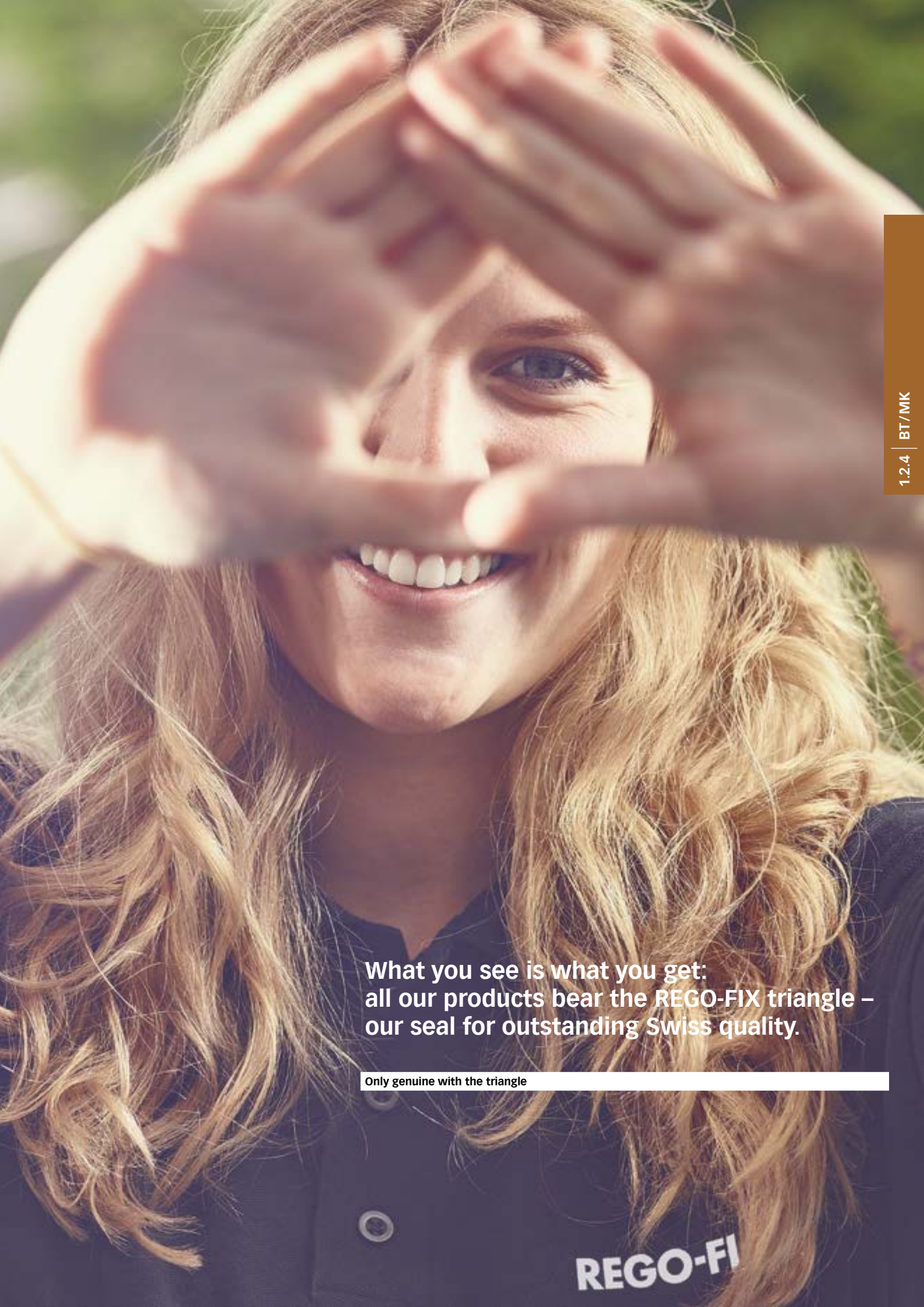
JIS B 6339

DIN ISO 7388-2

1.2.4 BT / MK

| Type | Part no. | Dimensions [mm] | |
|--------------------|------------|-----------------|----|
| | | D | L |
| BT 40 | | | |
| BT 40 / MK 1 x 050 | 2140.80110 | 25 | 50 |
| BT 40 / MK 2 x 050 | 2140.80210 | 32 | 50 |
| BT 40 / MK 3 x 070 | 2140.80320 | 40 | 70 |
| BT 40 / MK 4 x 095 | 2140.80430 | 48 | 95 |



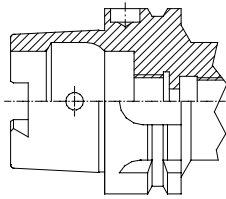


**What you see is what you get:
all our products bear the REGO-FIX triangle –
our seal for outstanding Swiss quality.**

Only genuine with the triangle

REGO-FI

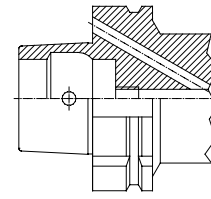
HSK forms and their key characteristics



Form A*

- // Standard type for machining centers and milling machines
- // For automatic tool change
- // Coolant supply through center via coolant tube
- // Drive keys at the end of HSK taper
- // Hole for data carrier DIN STD 69873 in the flange is available on request

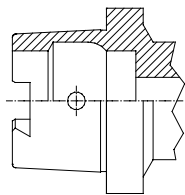
* Also usable in form C applications with side hole for manual tool change



Form B

- // For machining centers, milling and turning machines
- // With enlarged flange size for higher radial rigidity
- // For automatic tool change
- // Coolant supply through the flange
- // Drive keys at the flange

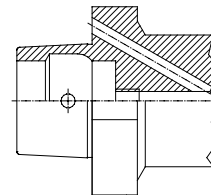
Available on request.



Form C

- // For transfer lines, special machines and modular tooling systems
- // For manual tool change
- // Drive keys at the end of HSK taper

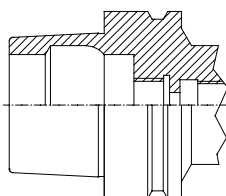
Available on request.



Form D

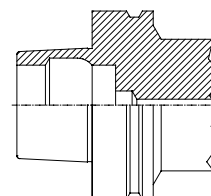
- // For special machines
- // With enlarged flange size for higher radial rigidity
- // For manual tool change
- // Coolant supply through the flange
- // Drive keys at the flange

Available on request.



Form E

- // For high-speed applications
- // For automatic tool change
- // Coolant supply through center via coolant tube
- // Without any drive keys for absolute symmetry



Form F

- // For high-speed applications
- // For automatic tool change
- // With enlarged flange size for higher radial rigidity
- // Without any drive keys for absolute symmetry

Available on request.

Weldon end mill holders HSK/WD

Designed for rotating applications, all our HSK holders are suited for high-speed applications where a consistent performance is key.

DIN 69893 / ISO 12164

Features of end mill holders (Weldon)

Runout TIR $\leq 3 \mu\text{m}$

Measured from inner bore to outer taper.

Side locking screw

For highest transferable torque.

ID chip hole (only HSK form A)

In accordance with DIN 69873 for 10 mm diameter.
Available on request.

Expert advice

For all HSK-A and HSK-E form holders a range of coolant tubes (KSR) is available.

For KSR part numbers please refer to page 42.



Weldon end mill holders HSK-A/WD

HSK/WD

DIN 69893

ISO 12164

| Type | Part no. | Dimensions [mm] | | | Drawing |
|-------------------------|------------|-----------------|----|-----|---------|
| | | d | D | L | |
| HSK-A 32 | | | | | |
| HSK-A 32 / WD 6 x 055* | 2532.30620 | 6 | 25 | 55 | 1 |
| HSK-A 32 / WD 8 x 055* | 2532.30820 | 8 | 28 | 55 | 1 |
| HSK-A 32 / WD 10 x 063* | 2532.31030 | 10 | 35 | 63 | 1 |
| HSK-A 32 / WD 12 x 065* | 2532.31230 | 12 | 42 | 65 | 1 |
| HSK-A 40 | | | | | |
| HSK-A 40 / WD 6 x 060 | 2540.30630 | 6 | 25 | 60 | 1 |
| HSK-A 40 / WD 8 x 060 | 2540.30830 | 8 | 28 | 60 | 1 |
| HSK-A 40 / WD 10 x 060 | 2540.31030 | 10 | 35 | 60 | 1 |
| HSK-A 40 / WD 12 x 070 | 2540.31240 | 12 | 42 | 70 | 1 |
| HSK-A 40 / WD 14 x 075 | 2540.31440 | 14 | 44 | 75 | 1 |
| HSK-A 40 / WD 16 x 075 | 2540.31640 | 16 | 48 | 75 | 1 |
| HSK-A 50 | | | | | |
| HSK-A 50 / WD 6 x 065 | 2550.30630 | 6 | 25 | 65 | 1 |
| HSK-A 50 / WD 8 x 065 | 2550.30830 | 8 | 28 | 65 | 1 |
| HSK-A 50 / WD 10 x 065 | 2550.31030 | 10 | 35 | 65 | 1 |
| HSK-A 50 / WD 12 x 080 | 2550.31250 | 12 | 42 | 80 | 1 |
| HSK-A 50 / WD 14 x 080 | 2550.31450 | 14 | 44 | 80 | 1 |
| HSK-A 50 / WD 18 x 080 | 2550.31850 | 18 | 50 | 80 | 1 |
| HSK-A 50 / WD 20 x 080 | 2550.32050 | 20 | 52 | 80 | 1 |
| HSK-A 63 | | | | | |
| HSK-A 63 / WD 6 x 065 | 2563.30630 | 6 | 25 | 65 | 1 |
| HSK-A 63 / WD 8 x 065 | 2563.30830 | 8 | 28 | 65 | 1 |
| HSK-A 63 / WD 10 x 065 | 2563.31030 | 10 | 35 | 65 | 1 |
| HSK-A 63 / WD 12 x 080 | 2563.31250 | 12 | 42 | 80 | 1 |
| HSK-A 63 / WD 14 x 080 | 2563.31450 | 14 | 44 | 80 | 1 |
| HSK-A 63 / WD 16 x 080 | 2563.31650 | 16 | 48 | 80 | 1 |
| HSK-A 63 / WD 18 x 080 | 2563.31850 | 18 | 50 | 80 | 1 |
| HSK-A 63 / WD 20 x 080 | 2563.32050 | 20 | 52 | 80 | 1 |
| HSK-A 63 / WD 25 x 110 | 2563.32560 | 25 | 65 | 110 | 2 |
| HSK-A 63 / WD 32 x 110 | 2563.33260 | 32 | 72 | 110 | 2 |

* HSK taper without side hole.

Weldon end mill holders

HSK-A/WD and HSK-E/WD

HSK/WD

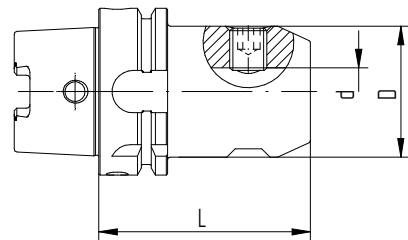
DIN 69893

ISO 12164

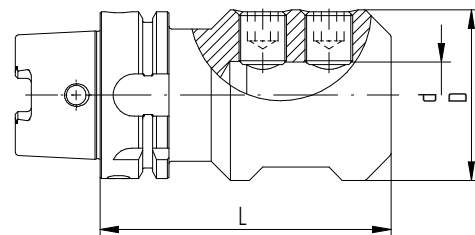
| Type | Part no. | Dimensions [mm] | | | Drawing |
|-------------------------|------------|-----------------|----|-----|---------|
| | | d | D | L | |
| HSK-A 100 | | | | | |
| HSK-A 100 / WD 6 x 080 | 2500.30650 | 6 | 25 | 80 | 1 |
| HSK-A 100 / WD 8 x 080 | 2500.30850 | 8 | 28 | 80 | 1 |
| HSK-A 100 / WD 10 x 080 | 2500.31050 | 10 | 35 | 80 | 1 |
| HSK-A 100 / WD 12 x 080 | 2500.31250 | 12 | 42 | 80 | 1 |
| HSK-A 100 / WD 14 x 080 | 2500.31450 | 14 | 44 | 80 | 1 |
| HSK-A 100 / WD 16 x 100 | 2500.31660 | 16 | 48 | 100 | 1 |
| HSK-A 100 / WD 18 x 100 | 2500.31860 | 18 | 50 | 100 | 1 |
| HSK-A 100 / WD 20 x 100 | 2500.32060 | 20 | 52 | 100 | 1 |
| HSK-A 100 / WD 25 x 100 | 2500.32560 | 25 | 65 | 100 | 2 |
| HSK-A 100 / WD 32 x 100 | 2500.33260 | 32 | 72 | 100 | 2 |
| HSK-A 100 / WD 40 x 110 | 2500.34060 | 40 | 80 | 110 | 2 |
| HSK-E 40 | | | | | |
| HSK-E 40 / WD 8 x 060 | 2540.30834 | 8 | 28 | 60 | 1 |
| HSK-E 40 / WD 10 x 060 | 2540.31034 | 10 | 35 | 60 | 1 |
| HSK-E 40 / WD 12 x 070 | 2540.31244 | 12 | 42 | 70 | 1 |
| HSK-E 40 / WD 16 x 070 | 2540.31644 | 16 | 48 | 70 | 1 |

Included in delivery: End mill holder and lock screw.

HSK-A: Hole for data carrier DIN STD 69873 in the flange available on request.



Drawing 1 HSK-A / WD



Drawing 2 HSK-A / WD

Universal shell/face mill holders

HSK-A/KFD and HSK-E/KFD

HSK/KFD

DIN 69893

ISO 12164

| Type | Part no. | Dimensions [mm] | | | Drawing | Accessories |
|--------------------------|------------|-----------------|----|----|---------|-------------|
| | | D | D1 | L | | Wrench |
| HSK-A 32 | | | | | | |
| HSK-A 32 / KFD 16 x 045 | 2532.41620 | 16 | 32 | 45 | 1 | FDS 16 |
| HSK-A 32 / KFD 22 x 050 | 2532.42230 | 22 | 40 | 50 | 1 | FDS 22 |
| HSK-A 40 | | | | | | |
| HSK-A 40 / KFD 16 x 030 | 2540.41600 | 16 | 32 | 30 | 1 | FDS 16 |
| HSK-A 40 / KFD 22 x 050 | 2540.42230 | 22 | 40 | 50 | 1 | FDS 22 |
| HSK-A 50 | | | | | | |
| HSK-A 50 / KFD 16 x 050 | 2550.41630 | 16 | 32 | 50 | 1 | FDS 16 |
| HSK-A 50 / KFD 22 x 050 | 2550.42230 | 22 | 40 | 50 | 1 | FDS 22 |
| HSK-A 50 / KFD 27 x 065 | 2550.42740 | 27 | 48 | 65 | 2 | FDS 27 |
| HSK-A 50 / KFD 32 x 065 | 2550.43240 | 32 | 58 | 65 | 2 | FDS 32 |
| HSK-A 63 | | | | | | |
| HSK-A 63 / KFD 16 x 060 | 2563.41640 | 16 | 32 | 60 | 1 | FDS 16 |
| HSK-A 63 / KFD 22 x 060 | 2563.42240 | 22 | 40 | 60 | 1 | FDS 22 |
| HSK-A 63 / KFD 27 x 060 | 2563.42740 | 27 | 48 | 60 | 1 | FDS 27 |
| HSK-A 63 / KFD 32 x 060 | 2563.43240 | 32 | 58 | 60 | 1 | FDS 32 |
| HSK-A 63 / KFD 40 x 070 | 2563.44050 | 40 | 70 | 70 | 2 | FDS 40 |
| HSK-A 100 | | | | | | |
| HSK-A 100 / KFD 16 x 060 | 2500.41640 | 16 | 32 | 60 | 1 | FDS 16 |
| HSK-A 100 / KFD 22 x 060 | 2500.42240 | 22 | 40 | 60 | 1 | FDS 22 |
| HSK-A 100 / KFD 27 x 060 | 2500.42740 | 27 | 48 | 60 | 1 | FDS 27 |
| HSK-A 100 / KFD 32 x 060 | 2500.43240 | 32 | 58 | 60 | 1 | FDS 32 |
| HSK-A 100 / KFD 40 x 070 | 2500.44050 | 40 | 70 | 70 | 1 | FDS 40 |
| HSK-A 100 / KFD 50 x 080 | 2500.45060 | 50 | 90 | 80 | 2 | FDS 50 |
| HSK-E 40 | | | | | | |
| HSK-E 40 / KFD 16 x 045 | 2540.41624 | 16 | 32 | 45 | – | FDS 16 |

Included in delivery: Universal shell/face mill holder, lock screw, feather key and drive ring.

For details on our FDS wrenches, please refer to page 40.

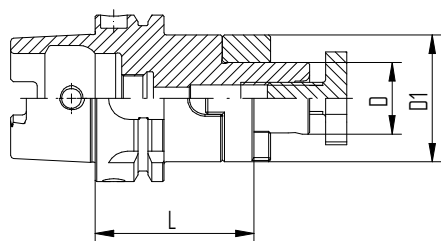
HSK-A: Hole for data carrier DIN STD 69873 in the flange available on request.

Universal shell/face mill holders HSK-A/KFD and HSK-E/KFD

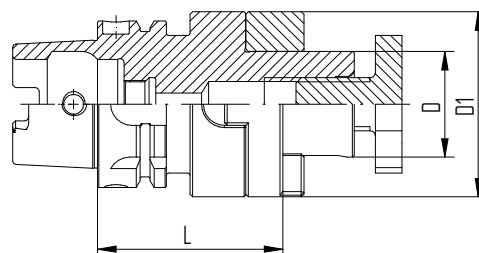
HSK/KFD

DIN 69893

ISO 12164



Drawing 1 HSK-A / KFD



Drawing 2 HSK-A / KFD

| Type | Part no. | d | Dimensions [mm] | |
|--------------------------|------------|------|-----------------|-----|
| | | | D | L |
| HSK-A 63 / KBF | | | | |
| HSK-A 63 / KBF 1 – 13 mm | 2563.50100 | 1–13 | 50 | 104 |

Included in delivery: Drill chuck and Allen key™.

HSK-A: Hole for data carrier DIN STD 69873 in the flange available on request.

Drill chucks HSK-A/KBF

Features and benefits

Clamping range

1–13 mm

Runout TIR

0.03 mm

Maximum tightening torque

20 Nm

Clamping force (at 20 Nm tightening torque)

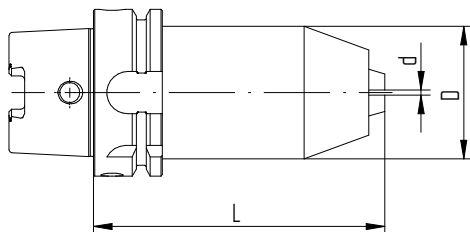
80 Nm

Maximum rpm

35,000 min⁻¹



HSK-A / KBF



HSK-A / KBF

Morse taper holders HSK-A/MK

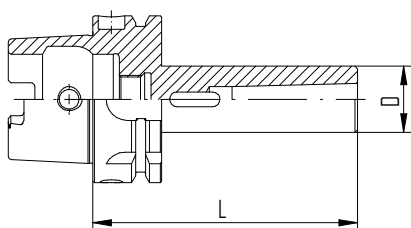
HSK-A/MK

DIN 69893

ISO 12164

| Type | Part no. | Dimensions [mm] | |
|-----------------------|------------|-----------------|-----|
| | | D | L |
| HSK-A 63 / MK | | | |
| HSK-A 63 / MK 1 x 100 | 2563.80140 | 25 | 100 |
| HSK-A 63 / MK 2 x 120 | 2563.80250 | 32 | 120 |
| HSK-A 63 / MK 3 x 140 | 2563.80360 | 40 | 140 |
| HSK-A 63 / MK 4 x 160 | 2563.80470 | 48 | 160 |

HSK-A: Hole for data carrier DIN STD 69873 in the flange available on request.



REGO-FIX CAPTO licensed by Sandvik Coromant

End mill holders REGO-FIX C/WD

These self-centering and balanced holders enable a high torque transmission and show a high bending strength.

ISO 12164

Features of end mill holders (Weldon)

Runout TIR $\leq 3 \mu\text{m}$

Measured from inner bore to outer taper.

Side locking screw

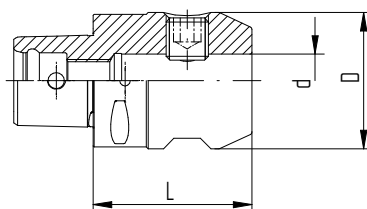
For highest transferable torque.

Certified REGO-FIX CAPTO – licensed by Sandvik Coromant – is manufactured at REGO-FIX Switzerland under license according to CAPTO specifications.

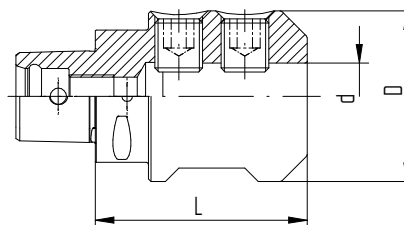


End mill holders REGO-FIX C / WD

| Type | Part no. | Dimensions [mm] | | | Drawing |
|------------------|------------|-----------------|----|----|---------|
| | | D1 | d | L | |
| C3 | | | | | |
| C3 / WD 6 x 045 | 2803.30610 | 25 | 6 | 45 | 1 |
| C3 / WD 8 x 045 | 2803.30810 | 28 | 8 | 45 | 1 |
| C3 / WD 10 x 050 | 2803.31020 | 35 | 10 | 50 | 1 |
| C3 / WD 12 x 055 | 2803.31220 | 42 | 12 | 55 | 1 |
| C4 | | | | | |
| C4 / WD 6 x 050 | 2804.30620 | 25 | 6 | 50 | 1 |
| C4 / WD 8 x 050 | 2804.30820 | 28 | 8 | 50 | 1 |
| C4 / WD 10 x 050 | 2804.31020 | 35 | 10 | 50 | 1 |
| C4 / WD 12 x 055 | 2804.31220 | 42 | 12 | 55 | 1 |
| C4 / WD 14 x 055 | 2804.31420 | 44 | 14 | 55 | 1 |
| C4 / WD 16 x 055 | 2804.31620 | 48 | 16 | 55 | 1 |
| C5 | | | | | |
| C5 / WD 6 x 050 | 2805.30620 | 25 | 6 | 50 | 1 |
| C5 / WD 8 x 050 | 2805.30820 | 28 | 8 | 50 | 1 |
| C5 / WD 10 x 055 | 2805.31020 | 35 | 10 | 55 | 1 |
| C5 / WD 12 x 060 | 2805.31230 | 42 | 12 | 60 | 1 |
| C5 / WD 14 x 060 | 2805.31430 | 44 | 14 | 60 | 1 |
| C5 / WD 16 x 060 | 2805.31630 | 48 | 16 | 60 | 1 |
| C5 / WD 18 x 060 | 2805.31830 | 50 | 18 | 60 | 1 |
| C5 / WD 20 x 060 | 2805.32030 | 52 | 20 | 60 | 1 |
| C5 / WD 25 x 080 | 2805.32550 | 65 | 25 | 80 | 2 |



Drawing 1 C / WD



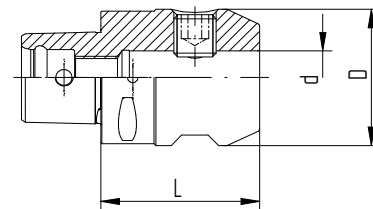
Drawing 2 C / WD

End mill holders REGO-FIX C/WD

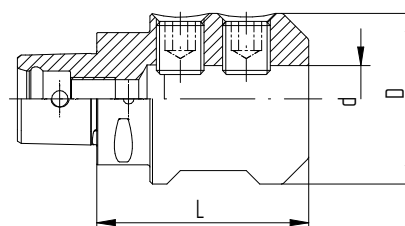
1.4.1 C/WD

| Type | Part no. | Dimensions [mm] | | | Drawing |
|------------------|------------|-----------------|----|-----|---------|
| | | D1 | d | L | |
| C6 | | | | | |
| C6 / WD 6 x 055 | 2806.30620 | 25 | 6 | 55 | 1 |
| C6 / WD 8 x 055 | 2806.30820 | 28 | 8 | 55 | 1 |
| C6 / WD 10 x 060 | 2806.31030 | 35 | 10 | 60 | 1 |
| C6 / WD 12 x 060 | 2806.31230 | 42 | 12 | 60 | 1 |
| C6 / WD 14 x 060 | 2806.31430 | 44 | 14 | 60 | 1 |
| C6 / WD 16 x 065 | 2806.31630 | 48 | 16 | 65 | 1 |
| C6 / WD 18 x 065 | 2806.31830 | 50 | 18 | 65 | 1 |
| C6 / WD 20 x 065 | 2806.32030 | 52 | 20 | 65 | 1 |
| C6 / WD 25 x 080 | 2806.32550 | 65 | 25 | 80 | 2 |
| C6 / WD 32 x 090 | 2806.33250 | 72 | 32 | 90 | 2 |
| C6 / WD 40 x 100 | 2806.34060 | 80 | 40 | 100 | 2 |

| | | | | | |
|------------------|------------|----|----|-----|---|
| C8 | | | | | |
| C8 / WD 6 x 070 | 2808.30640 | 25 | 6 | 70 | 1 |
| C8 / WD 8 x 070 | 2808.30840 | 28 | 8 | 70 | 1 |
| C8 / WD 10 x 070 | 2808.31040 | 35 | 10 | 70 | 1 |
| C8 / WD 12 x 070 | 2808.31240 | 42 | 12 | 70 | 1 |
| C8 / WD 14 x 070 | 2808.31440 | 44 | 14 | 70 | 1 |
| C8 / WD 16 x 070 | 2808.31640 | 48 | 16 | 70 | 1 |
| C8 / WD 18 x 070 | 2808.31840 | 50 | 18 | 70 | 1 |
| C8 / WD 20 x 070 | 2808.32040 | 52 | 20 | 70 | 1 |
| C8 / WD 25 x 080 | 2808.32550 | 65 | 25 | 80 | 2 |
| C8 / WD 32 x 080 | 2808.33250 | 72 | 32 | 80 | 2 |
| C8 / WD 40 x 110 | 2808.34060 | 80 | 40 | 110 | 2 |



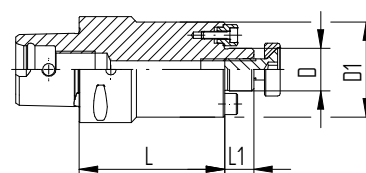
Drawing 1 C / WD



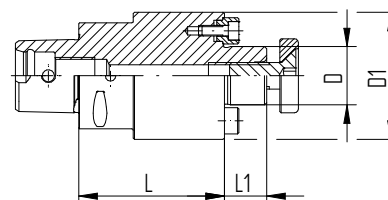
Drawing 2 C / WD

Shell mill arbors REGO-FIX C / MA

| Type | Part no. | Dimensions [mm] | | | | Drawing |
|------------------|------------|-----------------|----|----|----|---------|
| | | D | D1 | L | L1 | |
| C3 | | | | | | |
| C3 / MA 16 x 030 | 2803.01610 | 16 | 36 | 30 | 11 | 2 |
| C4 | | | | | | |
| C4 / MA 16 x 032 | 2804.01610 | 16 | 36 | 32 | 11 | 1 |
| C4 / MA 16 x 055 | 2804.01620 | 16 | 36 | 55 | 11 | 1 |
| C4 / MA 22 x 025 | 2804.02210 | 22 | 48 | 25 | 16 | 2 |
| C4 / MA 22 x 055 | 2804.02220 | 22 | 48 | 55 | 16 | 2 |
| C5 | | | | | | |
| C5 / MA 16 x 035 | 2805.01610 | 16 | 36 | 35 | 11 | 1 |
| C5 / MA 16 x 070 | 2805.01640 | 16 | 36 | 70 | 11 | 1 |
| C5 / MA 22 x 025 | 2805.02210 | 22 | 50 | 25 | 16 | 1 |
| C5 / MA 22 x 070 | 2805.02240 | 22 | 48 | 70 | 16 | 1 |
| C5 / MA 27 x 025 | 2805.02710 | 27 | 56 | 25 | 18 | 2 |
| C5 / MA 32 x 040 | 2805.03210 | 32 | 65 | 40 | 20 | 2 |



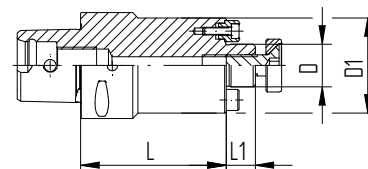
Drawing 1 C / MA



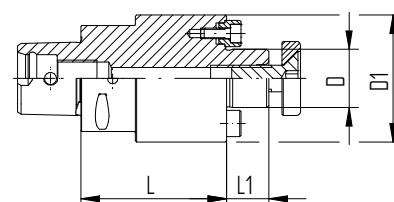
Drawing 2 C / MA

Shell mill arbors REGO-FIX C/MA

| Type | Part no. | Dimensions [mm] | | | | Drawing |
|------------------|------------|-----------------|----|----|----|---------|
| | | D | D1 | L | L1 | |
| C6 | | | | | | |
| C6 / MA 16 x 040 | 2806.01610 | 16 | 36 | 40 | 11 | 1 |
| C6 / MA 22 x 025 | 2806.02210 | 22 | 55 | 25 | 16 | 1 |
| C6 / MA 27 x 025 | 2806.02710 | 27 | 63 | 25 | 18 | 1 |
| C6 / MA 32 x 025 | 2806.03210 | 32 | 65 | 25 | 20 | 2 |
| C6 / MA 40 x 040 | 2806.04010 | 40 | 80 | 40 | 23 | 2 |
| C8 | | | | | | |
| C8 / MA 16 x 050 | 2808.01620 | 16 | 36 | 50 | 11 | 1 |
| C8 / MA 22 x 030 | 2808.02210 | 22 | 55 | 30 | 16 | 1 |
| C8 / MA 27 x 030 | 2808.02710 | 27 | 65 | 30 | 18 | 1 |
| C8 / MA 32 x 030 | 2808.03210 | 32 | 80 | 30 | 20 | 1 |
| C8 / MA 40 x 030 | 2808.04010 | 40 | 80 | 30 | 23 | 1 |



Drawing 1 C / MA



Drawing 2 C / MA

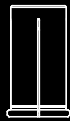
**We believe in sustainable business.
To us, this also means investing
in young talents and support them
to become machining experts.**

Investing into the future



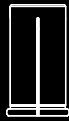
Reduction sleeves
for hydro chucks

HS



page 35

HS-CF
with coolant flush



page 35



Reduction sleeves for hydro chucks

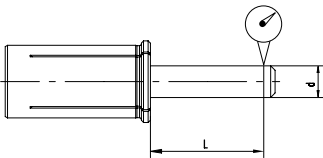
Reduction sleeves are designed to fit hydro chucks of different manufacturers. They are specially suited for high-precision clamping of cylindrical tool shanks.

Reduction sleeves for hydro chucks Our reduction sleeves are designed to fit hydro chucks of different manufacturers. They are specially suited for high-precision clamping of cylindrical tool shanks per DIN 6335 form HA, HB and HE, as well as tool shanks per DIN 1835 form B, C, D and E.

The special design of REGO-FIX reduction sleeves allows an efficient use of coolant through cutting tools. This self-sealing system works with the most common hydraulic expansion chucks.

- Correct assembly** Improper assembly can damage the concentricity of the reduction sleeve.
- // Insert tools the full length of the reduction sleeve
 - // Only clamp h6 tool shanks
 - // Do not clamp reduction sleeve without a tool, as this could result in a damaged reduction sleeve

Concentricity (TIR) of REGO-FIX HS type reduction sleeves



| Clamping diameter d [mm] | | | max. TIR |
|--------------------------|------|----|----------|
| > d | ≤ d | L | [mm] |
| 3.0 | 6.0 | 16 | 0.003 |
| 6.0 | 10.0 | 25 | 0.003 |
| 10.0 | 18.0 | 40 | 0.003 |
| 18.0 | 26.0 | 50 | 0.003 |



Swiss quality standard
Our products marked Swiss made are manufactured at our headquarters in Tenniken, Switzerland.

Reductions sleeves for hydro chucks HS

Features and benefits

Accurate precision

Runout TIR <3 μm

High flexibility

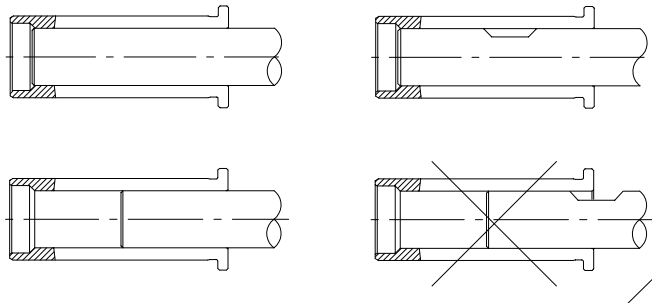
Clamp different tool shank diameters in hydro chucks: 12, 20, 25 and 32 mm.

Standard version HS suited for internal cooling

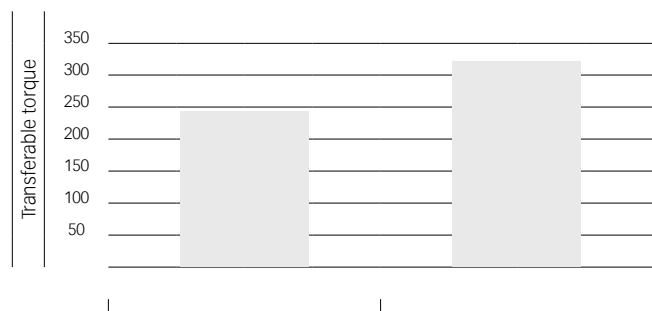
Metal-to-metal seal for cutting tools with internal coolant channels.

HS-CF suited for peripheral cooling

The coolant flush reductions sleeves HS-CF can be used for peripheral cooling due to their coolant channels.



Comparison of transferable torque at Ø 20 mm



Direct clamping
Shank Ø 20 mm in
toolholder Ø 20 mm

Reduction sleeve 32/20
Shank Ø 20 mm in
toolholder Ø 32 mm

Reduction sleeves HS and HS-CF

HS

| Ø bore [mm] | Part no. | | | | | | | |
|----------------|------------|------------|------------|------------|------------|------------|------------|------------|
| | HS 12-MB | HS 12 | HS 12-CF | HS 20 | HS 20-CF | HS 25 | HS 32 | HS 32-CF |
| 1.0 | 1912.01009 | - | - | - | - | - | - | - |
| 1.5 | 1912.01509 | - | - | - | - | - | - | - |
| 2.0 | 1912.02009 | - | - | - | - | - | - | - |
| 2.5 | 1912.02509 | - | - | - | - | - | - | - |
| 3.0 | - | 1912.03000 | 1912.03002 | 1920.03000 | 1920.03002 | 1925.03000 | 1932.03000 | - |
| 4.0 | - | 1912.04000 | 1912.04002 | 1920.04000 | 1920.04002 | 1925.04000 | 1932.04000 | - |
| 5.0 | - | 1912.05000 | 1912.05002 | 1920.05000 | 1920.05002 | 1925.05000 | 1932.05000 | - |
| 6.0 | - | 1912.06000 | 1912.06002 | 1920.06000 | 1920.06002 | 1925.06000 | 1932.06000 | 1932.06002 |
| 7.0 | - | 1912.07000 | - | 1920.07000 | - | 1925.07000 | 1932.07000 | - |
| 8.0 | - | 1912.08000 | 1912.08002 | 1920.08000 | 1920.08002 | 1925.08000 | 1932.08000 | 1932.08002 |
| 9.0 | - | 1912.09000 | - | 1920.09000 | - | 1925.09000 | 1932.09000 | - |
| 10.0 | - | 1912.10000 | - | 1920.10000 | 1920.10002 | 1925.10000 | 1932.10000 | 1932.10002 |
| 11.0 | - | - | - | 1920.11000 | - | - | 1932.11000 | - |
| 12.0 | - | - | - | 1920.12000 | 1920.12002 | 1925.12000 | 1932.12000 | 1932.12002 |
| 13.0 | - | - | - | 1920.13000 | - | - | 1932.13000 | - |
| 14.0 | - | - | - | 1920.14000 | 1920.14002 | 1925.14000 | 1932.14000 | 1932.14002 |
| 15.0 | - | - | - | 1920.15000 | - | - | 1932.15000 | - |
| 16.0 | - | - | - | 1920.16000 | 1920.16002 | 1925.16000 | 1932.16000 | 1932.16002 |
| 17.0 | - | - | - | - | - | - | 1932.17000 | - |
| 18.0 | - | - | - | 1920.18000 | - | 1925.18000 | 1932.18000 | 1932.18002 |
| 19.0 | - | - | - | - | - | - | 1932.19000 | - |
| 20.0 | - | - | - | - | - | 1925.20000 | 1932.20000 | 1932.20002 |
| 21.0 | - | - | - | - | - | - | - | - |
| 22.0 | - | - | - | - | - | - | 1932.22000 | - |
| 23.0 | - | - | - | - | - | - | - | - |
| 24.0 | - | - | - | - | - | - | - | - |
| 25.0 | - | - | - | - | - | - | 1932.25000 | 1932.25002 |

For further technical information, please refer to page 46 and 47.



Reduction sleeves HS and HS-CF

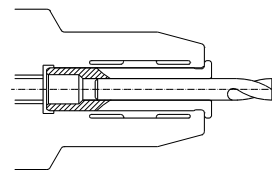
HS

| Ø bore | | Part no. | | | |
|-------------|--------|------------|------------|------------|------------|
| [decimal "] | [inch] | HS 12 | HS 20 | HS 25 | HS 32 |
| 0.125 | 1/8" | 1912.03181 | 1920.03181 | 1925.03181 | – |
| 0.1875 | 3/16" | 1912.04761 | 1920.04761 | 1925.04761 | 1932.04761 |
| 0.25 | 1/4" | 1912.06351 | 1920.06351 | 1925.06351 | 1932.06351 |
| 0.3125 | 5/16" | 1912.07941 | 1920.07941 | 1925.07941 | 1932.07941 |
| 0.375 | 3/8" | 1912.09521 | 1920.09521 | 1925.09521 | 1932.09521 |
| 0.4375 | 7/16" | – | 1920.11111 | 1925.11111 | 1932.11111 |
| 0.5 | 1/2" | – | 1920.12701 | 1925.12701 | 1932.12701 |
| 0.5625 | 9/16" | – | 1920.14291 | 1925.14291 | 1932.14291 |
| 0.625 | 5/8" | – | 1920.15881 | 1925.15881 | 1932.15881 |
| 0.6875 | 11/16" | – | – | 1925.17461 | 1932.17461 |
| 0.75 | 3/4" | – | – | 1925.19051 | 1932.19051 |
| 0.8125 | 13/16" | – | – | 1925.20631 | 1932.20631 |
| 0.875 | 7/8" | – | – | – | 1932.22221 |
| 0.9375 | 15/16" | – | – | – | 1932.23811 |
| 1.0 | 1" | – | – | – | 1932.25401 |

For further technical information, please refer to page 46 and 47.

Expert advice

The outer diameter of the reduction sleeves corresponds to each type, e.g. HS 12 equals diameter 12 mm.



HS section drawing

| Ø bore | | Part no. | | | |
|-------------|--------|------------|------------|------------|------------|
| [decimal "] | [inch] | HS 1/2" | HS 3/4" | HS 1" | HS 1 1/4" |
| 0.125 | 1/8" | 1913.03182 | 1919.03182 | 1926.03182 | – |
| 0.1875 | 3/16" | 1913.04762 | 1919.04762 | 1926.04762 | 1931.04762 |
| 0.25 | 1/4" | 1913.06352 | 1919.06352 | 1926.06352 | 1931.06352 |
| 0.3125 | 5/16" | 1913.07942 | 1919.07942 | 1926.07942 | 1931.07942 |
| 0.375 | 3/8" | 1913.09522 | 1919.09522 | 1926.09522 | 1931.09522 |
| 0.4375 | 7/16" | – | 1919.11112 | 1926.11112 | 1931.11112 |
| 0.5 | 1/2" | – | 1919.12702 | 1926.12702 | 1931.12702 |
| 0.5625 | 9/16" | – | 1919.14292 | 1926.14292 | 1931.14292 |
| 0.625 | 5/8" | – | 1919.15882 | 1926.15882 | 1931.15882 |
| 0.6875 | 11/16" | – | – | 1926.17462 | 1931.17462 |
| 0.75 | 3/4" | – | – | 1926.19052 | 1931.19052 |
| 0.8125 | 13/16" | – | – | – | – |
| 0.875 | 7/8" | – | – | – | – |
| 0.9375 | 15/16" | – | – | – | – |
| 1.0 | 1" | – | – | – | 1931.25402 |

For further technical information, please refer to page 46 and 47.

Expert advice

Our chip cover is ideally suited for the removal of chips. The cover can simply be clicked-in at the head of our reduction sleeves.

For part numbers and more information, please refer to page 41.

Expert advice

The coolant flush reductions sleeves HS-CF can be used for peripheral cooling due to their coolant channels.

Easy removing of the reduction sleeve from the hydro chucks thanks to the extractor EHS.

For part numbers and more information, please refer to page 41.

Contents

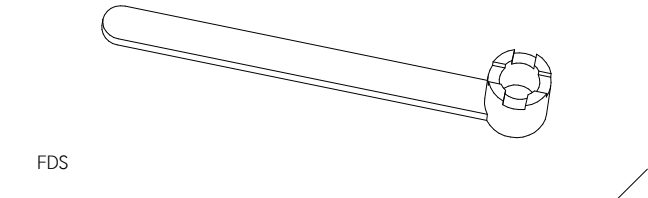
Multi Line accessories

Enhance your tool life with the proper accessories for safe toolholding.

| | |
|--|----|
| Wrenches for universal shell/face mill holders FDS | 40 |
| Extractors for reduction sleeves EHS | 41 |
| Chip covers for reduction sleeves CC | 41 |
| Coolant tubes KSR | 42 |
| Wrenches for coolant tubes SKR | 42 |
| Toolholding fixtures | 43 |



| Type | Part no. |
|---------------------|------------|
| Wrenches FDS | |
| FDS 16 | 7711.16000 |
| FDS 22 | 7711.22000 |
| FDS 27 | 7711.27000 |
| FDS 32 | 7711.32000 |
| FDS 40 | 7711.40000 |
| FDS 50 | 7711.50000 |



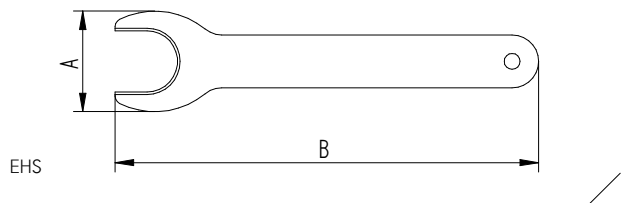
Extractors for reduction sleeves EHS

Chip covers for reduction sleeves CC

EHS

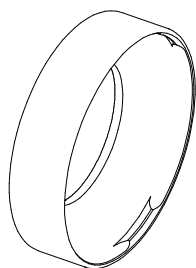
CC-HS

| Type | Part no. | A [mm] | B [mm] |
|---|------------|--------|--------|
| Extractors for reduction sleeves EHS | | | |
| EHS 12 – 1/2" | 7321.12000 | 24 | 100 |
| EHS 20 – 3/4" | 7321.20000 | 38 | 160 |
| EHS 25 – 1" | 7321.25000 | 51 | 180 |
| EHS 32 – 1 1/4" | 7321.32000 | 63 | 200 |



| Type | Part no. | Fits | Reduction sleeve Ø | |
|---|------------|----------------|--------------------|------------|
| | | | [mm] | [inch] |
| Chip covers for reduction sleeves CC-HS 12 | | | | |
| CC-HS 12 – 1/2" / Ø 4.0 mm | 7331.04200 | HS 12, HS 1/2" | 3-4 | 1/8" |
| CC-HS 12 – 1/2" / Ø 6.0 mm | 7331.06600 | HS 12, HS 1/2" | 5-6 | 3/16"-1/4" |
| CC-HS 12 – 1/2" / Ø 10.0 mm | 7331.10200 | HS 12, HS 1/2" | 7-10 | 5/16"-3/8" |

| | | | | |
|---|------------|----------------|-------|------------|
| Chip covers for reduction sleeves CC-HS 20 | | | | |
| CC-HS 20 – 3/4" / Ø 4.0 mm | 7333.04200 | HS 20, HS 3/4" | 3-4 | 1/8" |
| CC-HS 20 – 3/4" / Ø 6.0 mm | 7333.06600 | HS 20, HS 3/4" | 5-6 | 1/16"-1/4" |
| CC-HS 20 – 3/4" / Ø 10.0 mm | 7333.10200 | HS 20, HS 3/4" | 7-10 | 5/16"-3/8" |
| CC-HS 20 – 3/4" / Ø 14.0 mm | 7333.14200 | HS 20, HS 3/4" | 11-14 | 7/16"-1/2" |
| CC-HS 20 – 3/4" / Ø 16.0 mm | 7333.16200 | HS 20, HS 3/4" | 15-16 | 9/16"-5/8" |
| CC-HS 20 – 3/4" / Ø 18.0 mm | 7333.18200 | HS 20, HS 3/4" | 18 | - |



CC-HS

Coolant tubes KSR

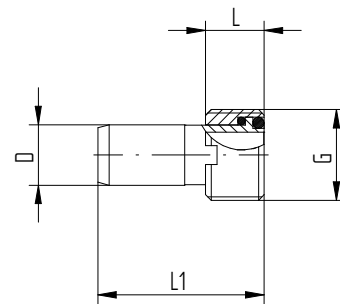
KSR

SKR

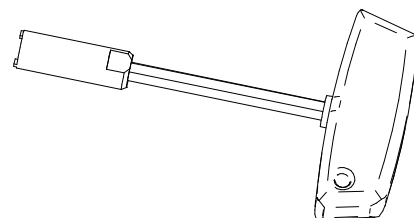
Wrenches for coolant tubes SKR

| Type | Part no. | Dimensions [mm] | | | G |
|--------------------------|------------|-----------------|------|------|------------|
| | | D | L | L1 | |
| Coolant tubes KSR | | | | | |
| KSR 25 | 7211.25000 | 5 | 4.5 | 17 | M 8 x 1 |
| KSR 32 | 7211.32000 | 6 | 5.5 | 25.7 | M 10 x 1 |
| KSR 40 | 7211.40000 | 8 | 7.5 | 29.2 | M 12 x 1 |
| KSR 50 | 7211.50000 | 10 | 9.5 | 32.7 | M 16 x 1 |
| KSR 63 | 7211.63000 | 12 | 11.5 | 36.2 | M 18 x 1 |
| KSR 80 | 7211.80000 | 14 | 13.5 | 39.7 | M 20 x 1.5 |
| KSR 100 | 7211.00000 | 16 | 15.5 | 43.6 | M 24 x 1.5 |
| KSR 125 | 7211.12500 | 16 | 15.5 | 43.6 | M 24 x 1.5 |

| Type | Part no. |
|---------------------|------------|
| Wrenches SKR | |
| SKR 25 | 7212.25000 |
| SKR 32 | 7212.32000 |
| SKR 40 | 7212.40000 |
| SKR 50 | 7212.50000 |
| SKR 63 | 7212.63000 |
| SKR 80 | 7212.80000 |
| SKR 100 | 7212.00000 |
| SKR 125 | 7212.12500 |



KSR



SKR

Toolholding fixtures

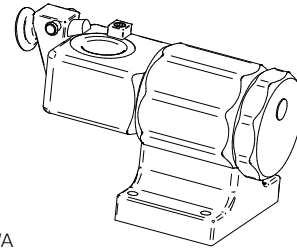
WMH

WA / SK

WA / HSK

WA / C

| Type | Part no. | Fits this interface |
|--------------------------|------------|---------------------|
| Tool assembly WMH | | |
| WMH-AC 45° | 7813.00000 | – |
| WMH-AC 90° | 7813.00100 | – |

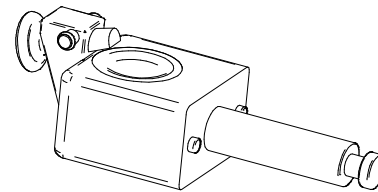


WMH / WA

| | | |
|-----------------------------|------------|------------------|
| Tool adapter WA / SK | | |
| WA / SK 30 | 7814.30100 | BT / CAT / SK 30 |
| WA / SK 40 | 7814.40100 | BT / CAT / SK 40 |
| WA / SK 50 | 7814.50100 | BT / CAT / SK 50 |

| | | |
|--|------------|------------------|
| Tool adapter WA / HSK-A / C / E | | |
| WA / HSK-A / C / E 25 | 7814.25300 | HSK-A / C / E 25 |

| | | |
|--------------------------------|------------|-----------|
| Tool adapter WA / HSK-A | | |
| WA / HSK-A 32 | 7814.32200 | HSK-A 32 |
| WA / HSK-A 40 | 7814.40200 | HSK-A 40 |
| WA / HSK-A 50 | 7814.50200 | HSK-A 50 |
| WA / HSK-A 63 | 7814.63200 | HSK-A 63 |
| WA / HSK-A 80 | 7814.80200 | HSK-A 80 |
| WA / HSK-A 100 | 7814.00200 | HSK-A 100 |



WA

| | | |
|------------------------------------|------------|--------------|
| Tool adapter WA / HSK-C / E | | |
| WA / HSK-C / E 32 | 7814.32500 | HSK-C / E 32 |
| WA / HSK-C / E 40 | 7814.40500 | HSK-C / E 40 |
| WA / HSK-C / E 50 | 7814.50500 | HSK-C / E 50 |
| WA / HSK-C / E 63 | 7814.63500 | HSK-C / E 63 |

| | | |
|--|------------|------------------|
| Tool adapter WA / HSK-B / D / F | | |
| WA / HSK-B / D / F 63 | 7814.63400 | HSK-B / D / F 63 |

| | | |
|----------------------------|------------|----------|
| Tool adapter WA / C | | |
| WA / C3 | 7814.03700 | CAPTO C3 |
| WA / C4 | 7814.04700 | CAPTO C4 |
| WA / C5 | 7814.05700 | CAPTO C5 |
| WA / C6 | 7814.06700 | CAPTO C6 |
| WA / C8 | 7814.08700 | CAPTO C8 |



Contents

Technical information

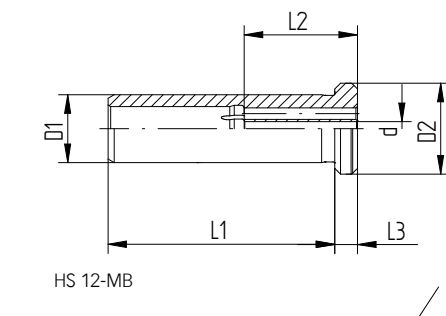
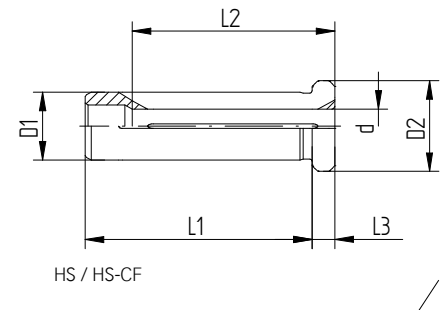
| | |
|-------------------------|----|
| Reduction sleeves | 46 |
| Spindle interface norms | 49 |



Reduction sleeves

HS

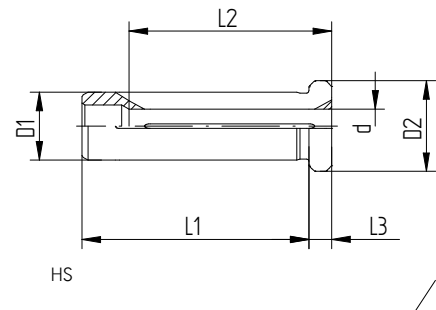
| Type | Measurements [mm] | | | | | | |
|-----------------------|-------------------|------|----|----|----|----|----|
| | d | d | D1 | D2 | L1 | L2 | L3 |
| HS 12 HS 12-CF | | | | | | | |
| Ø 3.0 | 3 | – | 12 | 16 | 40 | 29 | 4 |
| Ø 1/8" | 3.175 | 1/8 | 12 | 16 | 40 | 29 | 4 |
| Ø 4.0 | 4 | – | 12 | 16 | 40 | 29 | 4 |
| Ø 3/16" | 4.763 | 3/16 | 12 | 16 | 40 | 29 | 4 |
| Ø 5.0 | 5 | – | 12 | 16 | 40 | 29 | 4 |
| Ø 6.0 | 6 | – | 12 | 16 | 40 | 36 | 4 |
| Ø 1/4" | 6.35 | 1/4 | 12 | 16 | 40 | 36 | 4 |
| Ø 7.0 | 7 | – | 12 | 16 | 40 | 37 | 4 |
| Ø 5/16" | 7.938 | 5/16 | 12 | 16 | 40 | 37 | 4 |
| Ø 8.0 | 8 | – | 12 | 16 | 40 | 37 | 4 |
| Ø 9.0 | 9 | – | 12 | 16 | 40 | 37 | 4 |
| Ø 3/8" | 9.525 | 3/8 | 12 | 16 | 40 | 40 | 4 |
| Ø 10.0 | 10 | – | 12 | 16 | 40 | 40 | 4 |
| HS 12-MB | | | | | | | |
| Ø 1.0 | 1 | – | 12 | 16 | 40 | 20 | 4 |
| Ø 1.5 | 1.5 | – | 12 | 16 | 40 | 20 | 4 |
| Ø 2.0 | 2 | – | 12 | 16 | 40 | 20 | 4 |
| Ø 2.5 | 2.5 | – | 12 | 16 | 40 | 20 | 4 |
| HS 20 HS 20-CF | | | | | | | |
| Ø 3.0 | 3 | – | 20 | 25 | 50 | 28 | 4 |
| Ø 1/8" | 3.175 | 1/8 | 20 | 25 | 50 | 28 | 4 |
| Ø 4.0 | 4 | – | 20 | 25 | 50 | 28 | 4 |
| Ø 3/16" | 4.763 | 3/16 | 20 | 25 | 50 | 28 | 4 |
| Ø 5.0 | 5 | – | 20 | 25 | 50 | 28 | 4 |
| Ø 6.0 | 6 | – | 20 | 25 | 50 | 36 | 4 |
| Ø 1/4" | 6.35 | 1/4 | 20 | 25 | 50 | 36 | 4 |
| Ø 7.0 | 7 | – | 20 | 25 | 50 | 38 | 4 |
| Ø 5/16" | 7.938 | 5/16 | 20 | 25 | 50 | 37 | 4 |
| Ø 8.0 | 8 | – | 20 | 25 | 50 | 37 | 4 |
| Ø 9.0 | 9 | – | 20 | 25 | 50 | 38 | 4 |
| Ø 3/8" | 9.525 | 3/8 | 20 | 25 | 50 | 36 | 4 |
| Ø 10.0 | 10 | – | 20 | 25 | 50 | 40 | 4 |
| Ø 11.0 | 11 | – | 20 | 25 | 50 | 40 | 4 |
| Ø 12.0 | 12 | – | 20 | 25 | 50 | 45 | 4 |
| Ø 1/2" | 12.7 | 1/2 | 20 | 25 | 50 | 45 | 4 |
| Ø 13.0 | 13 | – | 20 | 25 | 50 | 45 | 4 |
| Ø 14.0 | 14 | – | 20 | 25 | 50 | 45 | 4 |
| Ø 15.0 | 15 | – | 20 | 25 | 50 | 45 | 4 |
| Ø 5/8" | 15.875 | 5/8 | 20 | 25 | 50 | 48 | 4 |
| Ø 16.0 | 16 | – | 20 | 25 | 50 | 48 | 4 |



Reduction sleeves

HS

| Type | Measurements [mm] | | | | | | |
|--------------|-------------------|-------|----|----|----|----|----|
| | d | d | D1 | D2 | L1 | L2 | L3 |
| HS 25 | | | | | | | |
| Ø 3.0 | 3 | - | 25 | 30 | 56 | 29 | 4 |
| Ø 1/8" | 3.175 | 1/8 | 25 | 30 | 56 | 29 | 4 |
| Ø 4.0 | 4 | - | 25 | 30 | 56 | 29 | 4 |
| Ø 3/16" | 4.763 | 3/16 | 25 | 30 | 56 | 29 | 4 |
| Ø 5.0 | 5 | - | 25 | 30 | 56 | 29 | 4 |
| Ø 6.0 | 6 | - | 25 | 30 | 56 | 37 | 4 |
| Ø 1/4" | 6.35 | 1/4 | 25 | 30 | 56 | 37 | 4 |
| Ø 7.0 | 7 | - | 25 | 30 | 56 | 37 | 4 |
| Ø 5/16" | 7.938 | 5/16 | 25 | 30 | 56 | 37 | 4 |
| Ø 8.0 | 8 | - | 25 | 30 | 56 | 37 | 4 |
| Ø 9.0 | 9 | - | 25 | 30 | 56 | 38 | 4 |
| Ø 3/8" | 9.525 | 3/8 | 25 | 30 | 56 | 38 | 4 |
| Ø 10.0 | 10 | - | 25 | 30 | 56 | 40 | 4 |
| Ø 7/16" | 11.112 | 7/16 | 25 | 30 | 56 | 40 | 4 |
| Ø 12.0 | 12 | - | 25 | 30 | 56 | 46 | 4 |
| Ø 1/2" | 12.7 | 1/2 | 25 | 30 | 56 | 46 | 4 |
| Ø 14.0 | 14 | - | 25 | 30 | 56 | 47 | 4 |
| Ø 9/16" | 14.288 | 9/16 | 25 | 30 | 56 | 47 | 4 |
| Ø 5/8" | 15.875 | 5/8 | 25 | 30 | 56 | 48 | 4 |
| Ø 16.0 | 16 | - | 25 | 30 | 56 | 48 | 4 |
| Ø 11/16" | 17.461 | 11/16 | 25 | 30 | 56 | 48 | 4 |
| Ø 18.0 | 18 | - | 25 | 30 | 56 | 48 | 4 |
| Ø 3/4" | 19.05 | 3/4 | 25 | 30 | 56 | 48 | 4 |
| Ø 20.0 | 20 | - | 25 | 30 | 56 | 50 | 4 |
| Ø 13/16" | 20.638 | 13/16 | 25 | 30 | 56 | 50 | 4 |



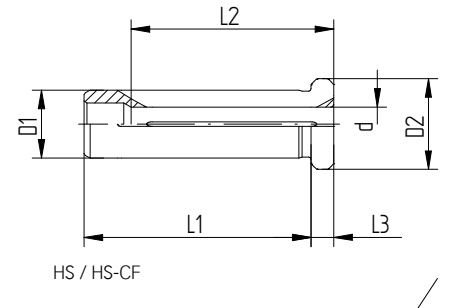
Expert advice

Reduction sleeve may be damaged, if clamped without a tool.

Reduction sleeves

HS

| Type | Measurements [mm] | | | | | | |
|----------------|-------------------|-------|----|----|----|----|----|
| | d | d | D1 | D2 | L1 | L2 | L3 |
| HS 32 HS 32-CF | | | | | | | |
| Ø 3/16" | 4.763 | 3/16 | 32 | 36 | 60 | 29 | 4 |
| Ø 5.0 | 5 | - | 32 | 36 | 60 | 29 | 4 |
| Ø 6.0 | 6 | - | 32 | 36 | 60 | 36 | 4 |
| Ø 1/4" | 6.35 | 1/4 | 32 | 36 | 60 | 36 | 4 |
| Ø 7.0 | 7 | - | 32 | 36 | 60 | 37 | 4 |
| Ø 5/16" | 7.938 | 5/16 | 32 | 36 | 60 | 36 | 4 |
| Ø 8.0 | 8 | - | 32 | 36 | 60 | 36 | 4 |
| Ø 9.0 | 9 | - | 32 | 36 | 60 | 37 | 4 |
| Ø 3/8" | 9.525 | 3/8 | 32 | 36 | 60 | 37 | 4 |
| Ø 10.0 | 10 | - | 32 | 36 | 60 | 40 | 4 |
| Ø 11.0 | 11 | - | 32 | 36 | 60 | 40 | 4 |
| Ø 7/16" | 11.112 | 7/16 | 32 | 36 | 60 | 45 | 4 |
| Ø 12.0 | 12 | - | 32 | 36 | 60 | 45 | 4 |
| Ø 1/2" | 12.7 | 1/2 | 32 | 36 | 60 | 45 | 4 |
| Ø 13.0 | 13 | - | 32 | 36 | 60 | 45 | 4 |
| Ø 14.0 | 14 | - | 32 | 36 | 60 | 46 | 4 |
| Ø 9/16" | 14.288 | 9/16 | 32 | 36 | 60 | 46 | 4 |
| Ø 15.0 | 15 | - | 32 | 36 | 60 | 46 | 4 |
| Ø 5/8" | 15.875 | 5/8 | 32 | 36 | 60 | 46 | 4 |
| Ø 16.0 | 16 | - | 32 | 36 | 60 | 48 | 4 |
| Ø 17.0 | 17 | - | 32 | 36 | 60 | 48 | 4 |
| Ø 11/16" | 17.461 | 11/16 | 32 | 36 | 60 | 48 | 4 |
| Ø 18.0 | 18 | - | 32 | 36 | 60 | 49 | 4 |
| Ø 19.0 | 19 | - | 32 | 36 | 60 | 49 | 4 |
| Ø 3/4" | 19.05 | 3/4 | 32 | 36 | 60 | 50 | 4 |
| Ø 20.0 | 20 | - | 32 | 36 | 60 | 50 | 4 |
| Ø 13/16" | 20.638 | 13/16 | 32 | 36 | 60 | 50 | 4 |
| Ø 22.0 | 22 | - | 32 | 36 | 60 | 50 | 4 |
| Ø 7/8" | 22.225 | 7/8 | 32 | 36 | 60 | 50 | 4 |
| Ø 15/16" | 23.813 | 15/16 | 32 | 36 | 60 | 52 | 4 |
| Ø 25.0 | 25 | - | 32 | 36 | 60 | 56 | 4 |
| Ø 1" | 25.4 | 1 | 32 | 36 | 60 | 56 | 4 |



Spindle interface norms

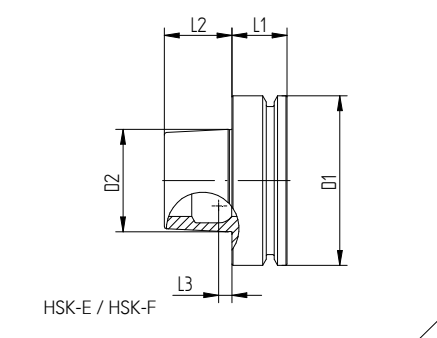
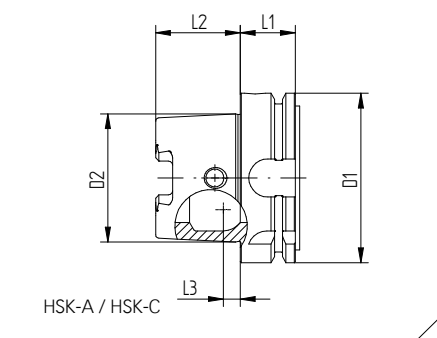
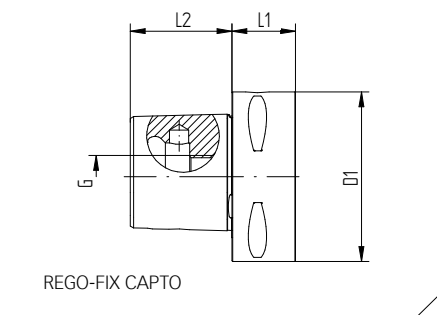
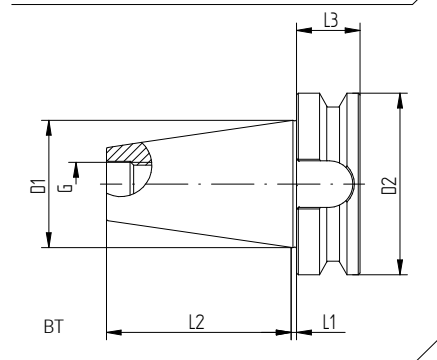
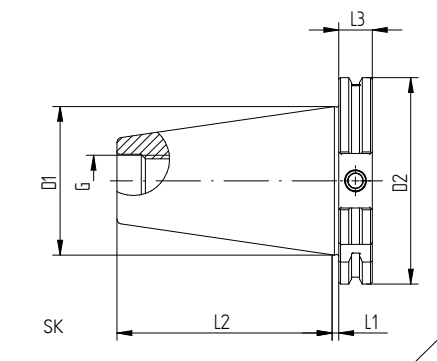
SK
DIN 69871

BT
MAS 403

CAPTO
ISO 26623

HSK
DIN 69893

| Type | Measurements [mm] | | | | | G |
|--------------------------------------|-------------------|-------|------|--------|-------|------------|
| | D1 | D2 | L1 | L2 | L3 | |
| SK DIN 69871 | | | | | | |
| SK 30 | 31.75 | 50 | 3.2 | 47.8 | 15.85 | M 12 |
| SK 40 | 44.45 | 63.55 | 3.2 | 68.4 | 15.85 | M 16 |
| SK 50 | 69.85 | 97.5 | 3.2 | 101.75 | 15.85 | M 24 |
| BT MAS 403 | | | | | | |
| BT 30 | 31.75 | 46 | 2 | 48.4 | 20 | M 12 |
| BT 40 | 44.45 | 63 | 2 | 65.4 | 25 | M 16 |
| BT 50 | 69.85 | 100 | 3 | 101.8 | 35 | M 24 |
| Polygon shank CAPTO ISO 26623 | | | | | | |
| Polygon shank C3 | 32 | – | 15 | 19 | – | M 12 x 1.5 |
| Polygon shank C4 | 40 | – | 20 | 24 | – | M 14 x 1.5 |
| Polygon shank C5 | 50 | – | 20 | 30 | – | M 16 x 1.5 |
| Polygon shank C6 | 63 | – | 22 | 38 | – | M 20 x 2 |
| Polygon shank C8 | 80 | – | 30 | 48 | – | M 20 x 2 |
| HSK DIN 69893 | | | | | | |
| HSK-A 25 | 25 | 19 | 10 | 13 | 2.5 | – |
| HSK-C 25 | 25 | 19 | 8 | 13 | 2.5 | – |
| HSK-E 25 | 25 | 19 | 10 | 13 | 2.5 | – |
| HSK-A 32 | 32 | 24 | 20 | 16 | 3.2 | – |
| HSK-C 32 | 32 | 24 | 10 | 16 | 3.2 | – |
| HSK-E 32 | 32 | 24 | 20 | 16 | 3.2 | – |
| HSK-A 40 | 40 | 30 | 20 | 20 | 4 | – |
| HSK-C 40 | 40 | 30 | 10 | 20 | 4 | – |
| HSK-E 40 | 40 | 30 | 20 | 20 | 4 | – |
| HSK-A 50 | 50 | 38 | 26 | 25 | 5 | – |
| HSK-C 50 | 50 | 38 | 12.5 | 25 | 5 | – |
| HSK-E 50 | 50 | 38 | 26 | 25 | 5 | – |
| HSK-F 50 | 50 | 30 | 26 | 20 | 4 | – |
| HSK-A 63 | 63 | 48 | 26 | 32 | 6.3 | – |
| HSK-C 63 | 63 | 48 | 12.5 | 32 | 6.3 | – |
| HSK-E 63 | 63 | 48 | 26 | 32 | 6.3 | – |
| HSK-F 63 | 63 | 38 | 26 | 25 | 5 | – |
| HSK-A 80 | 80 | 60 | 26 | 40 | 8 | – |
| HSK-C 80 | 80 | 60 | 16 | 40 | 8 | – |
| HSK-F 80 | 80 | 48 | 26 | 32 | 6.3 | – |
| HSK-A 100 | 100 | 75 | 29 | 50 | 10 | – |
| HSK-C 100 | 100 | 75 | 16 | 50 | 10 | – |
| HSK-E 100 | 100 | 70 | 29 | 50 | 10 | – |



Imprint

Get in touch

We love to talk to you and share our toolholding expertise to maximize your productivity.

REGO-FIX AG

Obermattweg 60 / 4456 Tenniken / Switzerland
P +41 61 976 1466 / F +41 61 976 1414
rego-fix@rego-fix.ch / www.rego-fix.com

Subsidiaries (distribution companies)

REGO-FIX Tool Corp.

4420 Anson Blvd / Whitestown / IN 46075 / USA
P +1 317-870-5959 / F +1 317-870-5955 / info@rego-fix.com

REGO-FIX Precision Tools (Shanghai) Co., Ltd.

Room 6301 / Building 6 / No. 338 Jialilue Road
Zhangjiang Hi-Tech Park / Shanghai / P.R. China 201203
P +86 21 6160 6933 / F +86 21 6160 6939 / sales@rego-fix.cn

Find your sales partner on www.rego-fix.com

Printed by Gmähle-Scheel Print-Medien GmbH
Printed on Arctic Highwhite
Arctic Highwhite is FSC certified for sustainable forestry.

REGO-FIX AG is ISO certified:
ISO 9001 for quality management / since 1996
ISO 14001 for environmental management / since 2007

This document should not be used or relied on for any purpose other than that intended by REGO-FIX AG.
No part of this document may be reproduced or transmitted in any other form without the express written permission of REGO-FIX AG.

The data given in this catalog are dependent on the conditions under which they are measured and are derived from tests carried out under defined lab conditions at REGO-FIX AG. The performance of these tools depends on the conditions under which they are used and may vary from case to case. The information given in this catalog is believed to be correct. REGO-FIX AG however assumes no responsibility or liability for any errors, inaccuracies or omissions that may appear in this catalog. Information in this catalog is subject to change without notice and should not be construed as a commitment by REGO-FIX AG or its subsidiaries. This is especially valid for adaptations to new or changed international standards or improvements to the products performance or production processes.

Capto® is a registered trademark of AB Sandvik Coromant.

© Copyright 2017 REGO-FIX AG





Swiss quality standard

Our products marked Swiss made are manufactured at our headquarters in Tenniken, Switzerland.



0862.00110 RFAG ML product catalog V1.1 01/2017 EN

Your REGO-FIX partner

REGO-FIX AG
Obermattweg 60 / 4456 Tenniken / Switzerland
www.rego-fix.com

Subsidiaries (distribution companies)
REGO-FIX Tool Corp.
Whitestown, IN / USA

REGO-FIX Precision Tools (Shanghai) Co., Ltd.
Shanghai / P.R. China